

# Varanasi Grc Construction

Belwa Gate, Kunwar Road, Varanasi, near Indian Oil  
Petrol Pump-221206

## Product Brochure

### GRC PRODUCTS

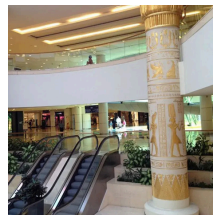
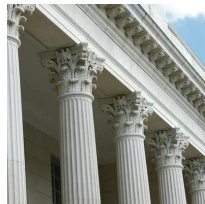
- GRC FINS
- GRC DOMES
- GRC FOUNTAINS
- GRC NOISE BARRIER
- DECORATIVE ELEMENT
- SCULPTURES & MURALS
- COLUMNS & CAPITAL
- GRC RAILING & BALUSTER
- GRC CLADDING PANELS
- GRC SCREEN & JALIS
- PLANTER & LANDSCAPE
- GRC CORNICES & ARCH

### Product Overview

#### ☐ **GRC CORNICES & ARCH**

GRC Cornices and Arch are used in designing the beauty of walls of exterior as

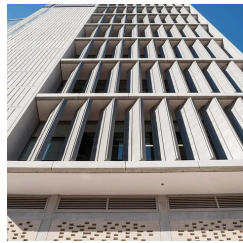
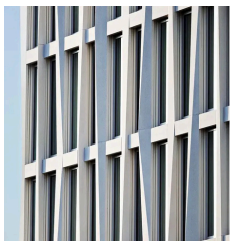
well as interior. The design of cornices are used to give the attractive view. The arch are used in rooms of the interior as per the needs, Arch can be used as a partition of the rooms or used on the wall designing.



## □ GRCFINS

GRC Fins are used as an essential part of multi-storey buildings for their high

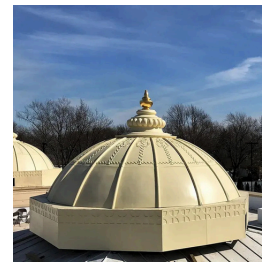
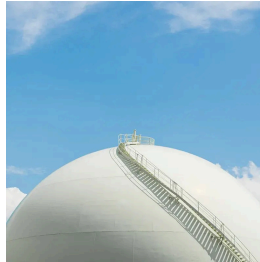
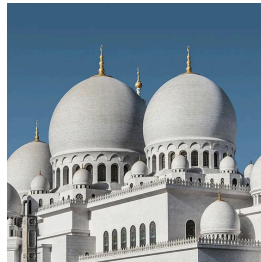
decorative value and good acoustic properties. Convenient to install, these fins are preferred by civil engineering professionals and architects for their low installation charge, high durability, Eco friendly quality and long lasting surface quality. Impact proof design, steel reinforcement free installation method, capacity to reduce structural load, ability to insulate even low frequency noise and reasonable price are the distinctive attributes of these GRC products. We would like to introduce ourselves as a quality conscious supplier and manufacturer of Glass Reinforced Concrete Fins. We offer the latest and wide range of GRC design panels & FINS to our customers. These high quality GRC Fins & Panels by GRC Bangalore can be given with innumerable textures & finishes and they can be coloured for a better or a theme like look. GFRC fins are composed of a mixture of Portland cement, fine aggregates (such as sand), water, and glass fibers. The addition of glass fibers significantly enhances the structural properties of the concrete.



## □ GRC DOMES

Glass Fiber Reinforced Concrete (GFRC) is a composite material that combines

concrete with fine glass fibers to enhance its mechanical properties and flexibility. This material is commonly used in construction due to its lightweight nature and durability. GFRC is particularly suitable for creating complex shapes and designs, making it a popular choice for constructing domes. GRC domes are beautiful architectural embellishments traditionally found in rooms and grand entryways of fine historical buildings. In general, tombs and buildings in the ancient Middle East, Mediterranean and India are domed in shape. Earlier architectural traditions explain why churches, mosques, domed or curved shape embodies the relationship between humans and divine realms. Owing to our prosperous knowledge in this area, our firm is providing a broad range of Decorative GRC Dome. These products are made utilizing extremely made input that is obtained from the prominent sellers of the industry. Due to their strong structure and precise sizes our provided range is extremely well-lined in the market. Our provided product is extremely utilized in the market.



### ☐ **GRC FOUNTAINS**

Glass fiber reinforced concrete (GFR) fountains are popular architectural

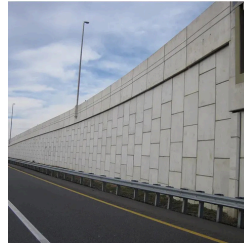
and decorative elements that combine the durability and strength of concrete with the aesthetics and versatility of glass fibers. GFR is a composite material composed of cement, fine aggregates, water, polymers, and glass fibers. It offers a lightweight yet sturdy alternative to traditional concrete, making it ideal for crafting intricate designs and shapes like fountains.



### ☐ **GRC NOISE BARRIER**

A Glass Fiber Reinforced Concrete (GFR) Noise Barrier is a type of sound

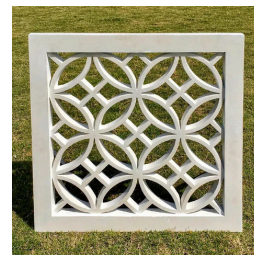
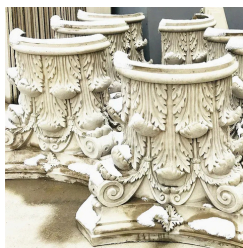
barrier or acoustic barrier designed to reduce noise pollution by absorbing or reflecting sound waves. These barriers are typically installed along highways, roads, railways, construction sites, or any other locations where noise from traffic, industry, or other sources can impact nearby residential or sensitive areas.



### ☐ **DECORATIVE ELEMENT**

BRIDGRCONSTRUCTION Decorative Elements are one of the most

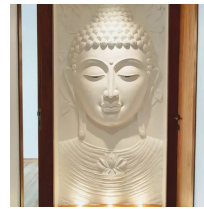
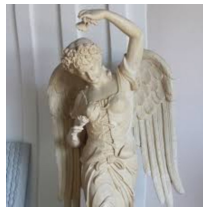
demandable arts in the market, these murals can be used on the facade of the building or house inside of the Building/house. GRC Decorative Element can be created as per the samples pictures or as per the drawings provided Architects/Clients... Decorative Elements are widely used in front elevation of the building and give an antique/Heritage look of traditional India.



## □ SCULPTURES&MURALS

GlassFiberReinforcedConcrete(GFRC)isaversatileandinnovativematerial

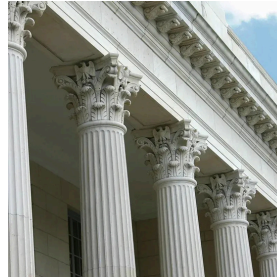
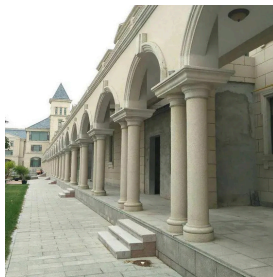
used in various architectural and artistic applications, including sculptures and murals. GFRC is a composite material that consists of a cementitious matrix reinforced with fine glass fibers, resulting in a strong and lightweight product that can be molded into intricate shapes and designs. This makes it an excellent choice for creating sculptures and murals with intricate details and textures.



## □ COLUMNS&CAPITAL

Turnanordinarybuildingstructureorarchitectureintoimpressivemasterpieces,

by adding columns and capitals into the structure. These are impressive decoration elements have great visual appeal. GRC columns, GRC pillars and allied architectural products are produced with rational use of available resources. These light weight, non-corrosive products can be provided in any size, design, pattern and color. Customers can be assured of no fading of these decorative products. These when installed in any building, impressively improves the aesthetics. We have professionals who can produce these products in bespoke specifications and deliver the same at the construction site. For the packaging of finished columns and capitals, we use bubble foam and fumigated wooden crates.





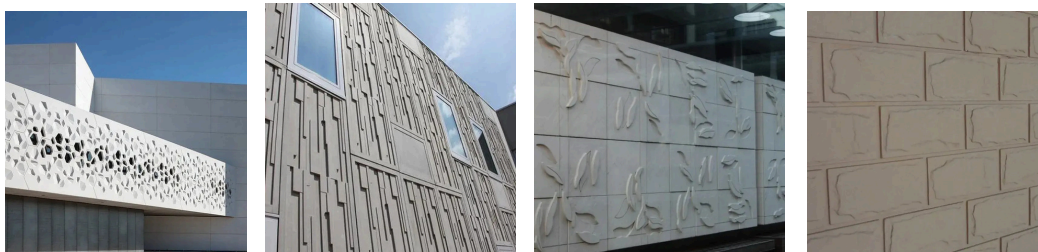
### ☐ **GRC RAILING & BALUSTER**

Glass Fiber Reinforced Concrete (GFRC) balusters are architectural elements used in construction and design. Balusters are vertical, decorative pillars or posts that support a railing or handrail along a staircase, balcony, or other architectural features. GFRC is a composite material that combines concrete and glass fibers to create a lightweight yet strong material suitable for a variety of applications, including balusters.



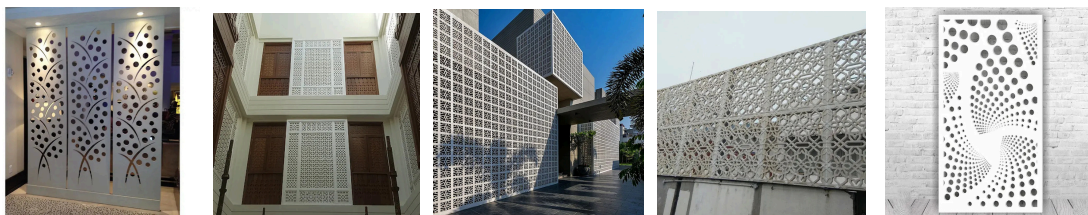
### ☐ **GRC CLADDING PANELS**

Glass Fiber Reinforced Concrete (GFRC) Cladding Panels are a type of architectural cladding material used in building construction. They combine the properties of concrete and glass fibers to create a lightweight, durable, and aesthetically versatile material suitable for exterior and interior applications.



### ☐ **GRC SCREEN & JALIS**

We at BRIAD GRC CONSTRUCTION, work hard to gain a better position than before by providing an exclusive range of GRC Screens. All our products are manufactured under the utmost industry norm and standards. In order to keep global demands, we keep offering our products with new levels of perfection. At very affordable rates, we offer these GRC design sheets with the utmost quality. Our wide range of products are widely admired for their high strength and top quality. Our innovative designs also help the architects & civil engineers to reduce the actual dead loads from their architectures or civil structures hence reducing the overall cost of the project. GRC Bangalore the best GRC Screens in Bangalore.



## □ **PLANTER&LANDSCAPE**

BRIADGRCCONSTRUCTIONPlanterandLandscapearespecifically

designed and manufactured to enhance the beauty of gardens, parks, building facades, and other such places. As per the diversified demands of clients, we are continuously striving to offer the wide array of patterns, designs and dimensions in GRC Planter and Landscape that too at most competitive prices. Due to high demand, GRC Bangalore Planter and Landscape are available in custom-made options as per the requirement of the customers. Our GRC products are well-demanded in the market for their longer life and enhanced durability. GRC Bangalore Planter and Landscape have greater density and impact resistance which helps it retain its original value for a longer period of time and makes it the best option to be used in the public realm. GRC has essential qualities that make it the perfect solution for plant containers.



## Details

BRIAD GRC CONSTRUCTION is involved in the manufacturing of the most versatile building materials available to architects and engineers around the globe. Glass Fiber Reinforced Concrete (GFRC) is a composite material made up of cement, fine aggregate (such as sand), water, chemical admixtures, and glass fibers. It is designed to have enhanced strength, durability, and flexibility compared to traditional concrete. The inclusion of glass fibers in the concrete mix improves its structural properties and allows for the creation of thinner and lighter concrete elements while maintaining strength.

## OUR LATEST WORKS

